








JVC

The Perfect Experience

V.NETWORKS<http://jvc.com/vnetworks>

V.NETWORKS Megapixel mini-dome comparison

2009_US

		JVC		AXIS		Panasonic	SONY	
		VN-X235U	VN-X235VPU	216MFD	216MFD-V	WV-NF302	SNC-DM110	SNC-DM160
								
		1.3 megapixel	1.3 megapixel	1.3 megapixel	1.3 megapixel	1.3 megapixel	1.3 megapixel	1.3 megapixel
Image Device		1/3 progressive CCD		1/3 Progressive CMOS		1/3 Progressive CCD	1/3 progressive CCD	
Lens Type / Lens Mount		3.0x vari (x8 digital) 3-9mm		3.6x vari 2.8-10mm		3.6x vari (x4 digital) 2.8-10mm	3.6x vari (x2 digital) 2.8-10mm	
Day / Night Function		True D/N		-		Easy D/N	-	True D/N
Minimum Illumination	Color	0.8 lx		1.0 lx		1.5 lx	0.8 lx	0.8 lx
	B/W	0.08 lx		-		0.9 lx	-	0.15 lx
Streaming priority option (max)		Yes (max. 20 clients)		-		Yes (max. 16)	-	
Compression		MJPEG / MPEG4		MJPEG / MPEG4		MJPEG / MPEG4	MJPEG / MPEG4	
Max Frame Rate (Dual)	JPEG	1280x960 15 fps		1280x1024 12 fps		1280x960 5 fps	1280x960 15 fps	
	MPEG4	640x480 15 fps		800x600 30 fps		640x480 15 fps	640x480 30 fps	
Focus Adjustment		Yes * Patent pending Fine focus adjust mech		-		Yes	Yes	
Motion detection		Yes		Yes		Yes	Yes	
Digital PTZ and preset position		Yes / 20 positions		-		-	Yes / -	
Audio communication		2-way		2-way		2-way	2-way	
Display Mode		Yes		-		-	-	
Alarm I/O		2/2		1/1		1/2	1/2	
Analog Monitor Output		Yes		-		Yes	Yes	
Power		24VAC / PoE		24VAC / PoE		24VAC / PoE	24VAC / PoE	
Dust / Water protect (IP66)		-	Yes	-		-	-	Yes
Vandal protect		Yes		-	Yes	-	-	Yes
Flush mount		Yes	-	Paid option		Paid option	Paid option	
Operating Temperature		14 to 122 F	14 to 122 F -22 to 122 F *	32 to 122 F		14 to 122 F	32 to 122 F	-22 to 122 F
Warranty period		3YR(Labor) / 3YR(Parts)						
Note		* Optional heater required with 24VAC						

JVC Vandal Protection standard

After three strikes from hammer dropping, the camera is checked: works normally with no cracks in the bubble.



11 lbs hammer
5kg hammer

"J" stands for "Joule" which is the energy exerted by a force of one newton acting to move an object through a distance of one metre.



3.28 ft
1 m



Vandal Proof
VN-X235VPU



0.9 ft
0.3 m



Vandal Resistant
VN-X235U



Fine Focus Adjustment [Patent pending]



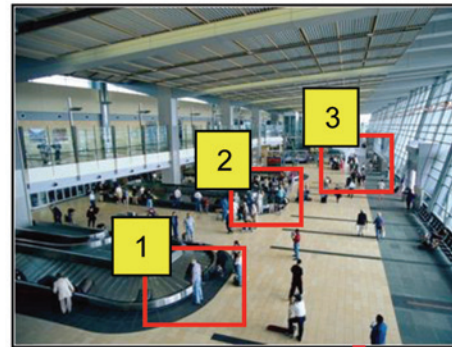
Coarse focus adjust

The Fine Focus adjust gear moves the focus ring by little and little.

Fine focus adjust



Digital PTZ and 20 preset patrol



Original angle
(Home)

